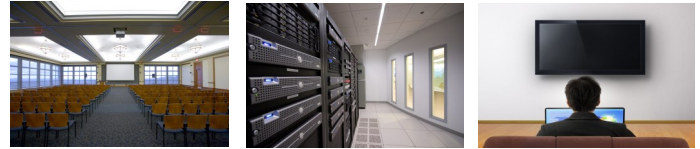


## TeleDelta IPTV and LiveStream

# University / Education Facility



### General Requirements

#### Capture and deliver live and on-demand educational content In-house and world-wide (Any-Screen, Any-Where)

- Scalable IPTV network to grow with increasing streaming services / viewer numbers
- Capture, record and distribute Live and On-demand teaching sessions (Lecture capture)
- Compatibility with BYO devices and operating platforms (Apple, Android, mobile, tablets, PCs)
- Maintain a high QoS across variable traffic volumes
- User experience must be simple and straight-forward

### Specific IPTV Requirements

- Integration of TeleDelta LiveStream (content capture) into IPTV network
- Live / on-demand content distribution across campus and across public / private internet (TeleDelta OTTer)
- Integration with existing IP / Corporate network - no dedicated IPTV network in-place
- Secure content delivery to authorised users
- Integration with IT management / supervisory control

### System Outcome

This specified TeleDelta solution combines three IP solutions into the one project brief. 1. Content Capture 2. Content Delivery 3. Device Playback

1. **Content Capture and Recording (TeleDelta LiveStream)**, utilising the IP based TeleDelta LiveStream platform allowed for in-room content capture. In this specification the LiveStream is locally controlled allowing presenters to Start, Pause and Stop their recording as required, with permissions the local presenter can also turn on/off live content delivery, a local confidence monitor can also be present for local feedback.
2. **Content Delivery (TeleDelta OTTer)**, once content has been captured via the LiveStream platform it is made ready for delivery (Live or On-demand) and storage for further archival / editing purposes. The TeleDelta IPTV solution can utilise common IP networks or dedicated IPTV network for local delivery. For multi-format / device delivery transcoding and format conversion are performed to optimise to viewing experience. Information such as device connection speed, screen size and device type are taken into the transcoding mix.
3. **Device Play-back (End User)**, Each device, operating system and platform has a unique requirement for live / on-demand playback. The TeleDelta IPTV platform provides the optimal viewing experience for the different devices. Secure content is protected by customised web-based username / password login information, once logged-in users can access Live / VOD content as required.

For more information on the TeleDelta Education solution please contact us.

For more information please contact your local distributor or email [sales@teledelta.com](mailto:sales@teledelta.com)

