



RF/Microwave Circulator: CN-0.900

Print This Page

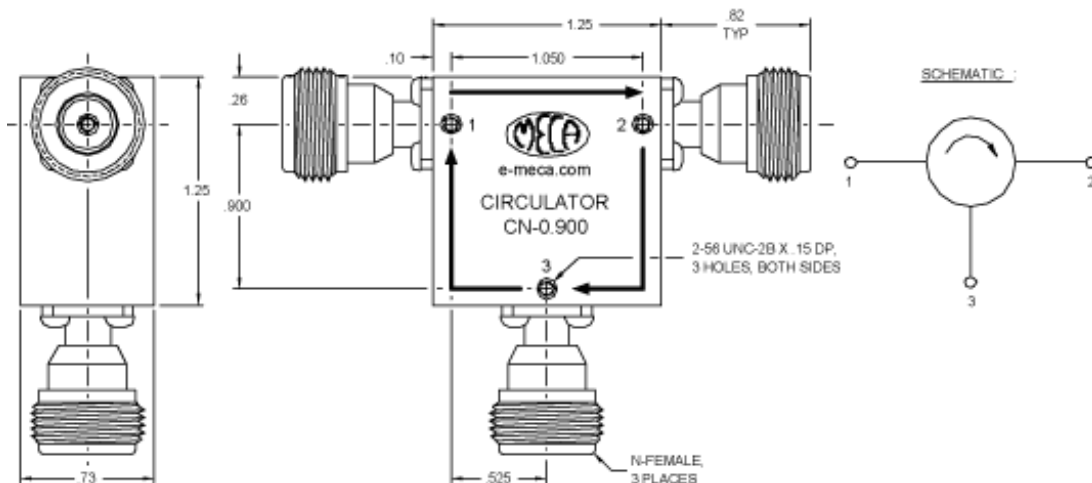
An RF isolator is a two-port passive device made of magnets and ferrite material which is used to protect other RF components from excessive signal reflection, while an RF circulator is a three-port passive device used to control the direction of signal flow in a circuit. MECA offers twenty-four models of isolators and circulators in both N & SMA-Female connectors with average power ratings from 2 - 250 watts. The most "popular" frequency bands between 0.8 - 18.0 GHz are readily available and can ship from STOCK to 4 weeks after receipt of your order.

ELECTRICAL SPECS

Frequency:	0.8-1.0 GHz
Insertion Loss (Max):	0.4
VSWR	1.25:1
Isolation:	20 dB
Average Power:	250 Watts

MECHANICAL SPECS

Connector Style:	N-Female
Connectors:	Brass Nickel Plated
Contact Pin:	Beryllium Copper Gold Plate
Operating Temp.:	-55° C to +85° C
Weight:	4.07



This document gives only a general description of the product(s) and shall not form part of any contract. Please contact a MECA Applications Engineer for most current specification drawing.

