

TouchLink Pro

PRO SERIES TOUCHPANELS



Powerful and Intuitive Control Interfaces for AV Systems

- ▶ TouchLink® Pro touchpanels in sizes from 3.5" to 17"
- ▶ TouchLink Pro control systems - Combine stylish TouchLink Pro touchpanels with a built-in IP Link Pro control processor
- ▶ TLI Pro 101 TouchLink Interface - Use a third party touchscreen display within your control system
- ▶ GUI Designer Software - Efficiently create TouchLink Pro user interfaces

Extron

TOUCHLINK PRO

In many ways, the choice of a control interface dictates a user's overall satisfaction with the AV system. That's why we design our TouchLink® Pro user interfaces to exceed expectations for ease-of-use, then place equally-strict goals on features, security, and smooth, worry-free integration. Our TouchLink Pro family works with any IP Link Pro control processor and is designed for use in AV system applications that requires easy, complete, interactive control of a broad range of source devices.

TouchLink Pro Touchpanels

This series includes full-featured, customizable touchpanels that range in sizes from 3.5" up to 17", available in a variety of mounting options including tabletop, wall mount, and flip-up Cable Cubby enclosures. Several models feature vibrant, capacitive touchscreens with edge-to-edge glass, and multi-source, high-resolution video preview.

TouchLink Pro Control Systems

TouchLink Pro control systems are complete solutions that combine a TouchLink Pro touchpanel with an integrated IP Link Pro control processor. This all-in-one approach streamlines system designs by consolidating essential control system components, freeing up space, and easing integration. The included port expansion adapter makes it easy to add traditional control ports when needed, directly at the touchpanel. They maintain the stylish design and high performance of our TouchLink Pro touchpanels.

TouchLink Interface – TLI Pro 101

The Extron TLI Pro 101 is a TouchLink Interface that allows a third-party touchscreen display to be used as a point of control within an Extron Pro Series control system. This unique interface includes a scaled HDCP-compliant HDMI input for video



preview. The scaled output supports displays from 800x600 to 1920x1200, as well as HDTV 1080p/60 and 2K. The TLI Pro 101 works with any Extron IP Link® Pro control processor, enabling third-party touchscreen devices to be used for complete, interactive control of a broad range of source devices.

GUI Designer Software

Extron GUI Designer is used for the design, creation, and maintenance of Extron TouchLink Pro user interfaces. Begin with ready-to-use design templates and resource kits, or start from scratch and build your own layout using our comprehensive software. The available design elements are fully customizable and matched carefully to popular AV system applications.

TouchLink Pro Themes

Extron pre-configured design themes to help streamline and

accelerate the TouchLink Pro user interface development process. These are ideal for single display rooms, dual display rooms, divisible rooms, multi-image systems, and videoconference suites.

Extron Control

Extron Control is an easy-to-use AV control system app that gives users complete access to Extron control systems directly from Apple iOS or Android devices. It is available for download from the App Store and Google Play.



TOUCHLINK PRO TOUCHPANELS



Extron TouchLink Pro touchpanels are designed with many enhanced features, including high-performance processors, ample memory, vibrant displays with high resolution Gorilla Glass® touchscreens, and stylish enclosures. They all feature the convenience of PoE - Power over Ethernet, which allows them to receive power and communication over a single Ethernet cable. They are ideal for any environment requiring a stylish touchpanel with a fully-customizable interface.

Series Common Features

- ▶ Fully customizable touchpanel user interface
- ▶ Compatible with all IP Link® Pro control processors
- ▶ Power over Ethernet provides power and communication over a single Ethernet cable
- ▶ Built-in speakers
- ▶ Light sensor adjusts screen brightness as the ambient room lighting changes
- ▶ Configurable red and green status lights indicate a room's availability or call status
- ▶ On-screen menus simplify touchpanel setup

TLP Pro 1720TG

17" Tabletop TouchLink Pro Touchpanel

Unique Features

- 17" capacitive touchscreen with 1920x1080 resolution and 16 million colors
- Full-motion video preview and monitoring with HDMI and XTP inputs
- 3.5 mm headphone jack provides local audio out from the touchpanel
- Weighted base allows up to 40° of tilt
- Kensington lock support
- Motion detector wakes touchpanel
- Configurable red and green status lights indicate a room's availability or call status
- Sits on a tabletop or installs on a VESA mount

| Model | Version Description | Part Number |
|----------------|-------------------------|-------------|
| TLP Pro 1720TG | Black - Tabletop & VESA | 60-1345-02 |



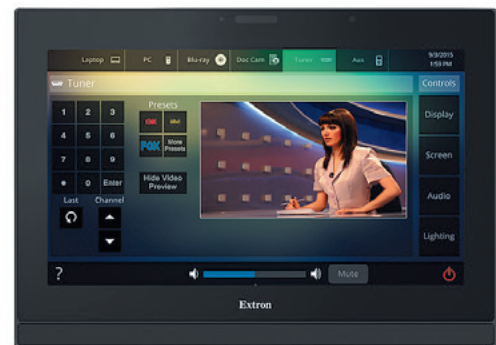
TLP Pro 1720MG

17" Wall Mount TouchLink Pro Touchpanel

Unique Features

- 17" capacitive touchscreen with 1920x1080 resolution and 16 million colors
- Full-motion video preview and monitoring with HDMI and XTP inputs
- 3.5 mm headphone jack provides local audio out from the touchpanel
- Motion detector wakes touchpanel
- Configurable red and green status lights indicate a room's availability or call status
- Mounts on a wall, lectern, or any flat surface

| Model | Version Description | Part Number |
|----------------|---------------------|-------------|
| TLP Pro 1720MG | Black - Wall Mount | 60-1344-02 |



TLP Pro 1520TG

15" Tabletop TouchLink Pro Touchpanel

Unique Features

- 15" capacitive touchscreen with 1366x768 resolution and 16 million colors
- Full-motion video preview and monitoring with HDMI and XTP inputs
- 3.5 mm headphone jack provides local audio out from the touchpanel
- Kensington lock support
- Motion detector wakes touchpanel
- Configurable red and green status lights indicate a room's availability or call status
- Sits on a tabletop or installs on a VESA mount

| Model | Version Description | Part Number |
|----------------|-------------------------|-------------|
| TLP Pro 1520TG | Black - Tabletop & VESA | 60-1343-02 |



TOUCLINK PRO TOUCHPANELS

TLP Pro 1520MG

15" Wall Mount TouchLink Pro Touchpanel

Unique Features

- 15" capacitive touchscreen with 1366x768 resolution and 16 million colors
- Full-motion video preview and monitoring with HDMI and XTP inputs
- 3.5 mm headphone jack provides local audio out from the touchpanel
- Motion detector wakes touchpanel
- Configurable red and green status lights indicate a room's availability or call status
- Mounts on a wall, lectern, or any flat surface



Model

TLP Pro 1520MG

Version Description

Black - Wall Mount

Part Number

60-1342-02

TLP Pro 1220TG

12" Tabletop TouchLink Pro Touchpanel

Unique Features

- 12" capacitive touchscreen with 1280x800 resolution and 16 million colors
- Full-motion video preview and monitoring with HDMI and XTP inputs
- 3.5 mm headphone jack provides local audio out from the touchpanel
- Weighted base allows up to 40° of tilt
- Kensington lock support
- Motion detector wakes touchpanel
- Configurable red and green status lights indicate a room's availability or call status
- Sits on a tabletop or installs on a VESA mount



Model

TLP Pro 1220TG

Version Description

Black - Tabletop & VESA

Part Number

60-1341-02

TLP Pro 1220MG

12" Wall Mount TouchLink Pro Touchpanel

Unique Features

- 12" capacitive touchscreen with 1280x800 resolution and 16 million colors
- Full-motion video preview and monitoring with HDMI and XTP inputs
- 3.5 mm headphone jack provides local audio out from the touchpanel
- Motion detector wakes touchpanel
- Configurable red and green status lights indicate a room's availability or call status
- Mounts on a wall, lectern, or any flat surface



Model

TLP Pro 1220MG

Version Description

Black - Wall Mount

Part Number

60-1340-02

TLP Pro 1025T

10" Tabletop TouchLink Pro Touchpanel

Unique Features

- 10" capacitive touchscreen with 1280x800 resolution and 24-bit color depth
- Gorilla Glass® screen is tough, scratch and smudge-resistant
- Motion detector wakes touchpanel
- Configurable red and green status lights indicate a room's availability or call status
- High speed USB 2.0 port

| Model | Version Description | Part Number |
|------------------|-----------------------------|-------------|
| TLP Pro 1025T | Black - Tabletop | 60-1565-02 |
| TLP Pro 1025T | White - Tabletop | 60-1565-03 |
| TLP Pro 1025T NC | Black - Tabletop, No Camera | 60-1565-12 |
| TLP Pro 1025T NC | White - Tabletop, No Camera | 60-1565-13 |



TLP Pro 1025M

10" Wall Mount TouchLink Pro Touchpanel

Unique Features

- 10" capacitive touchscreen with 1280x800 resolution and 24-bit color depth
- Gorilla Glass® screen is tough, scratch and smudge-resistant
- Digital input allows for a connection with a variety of devices, such as sensors and switches
- Motion detector wakes touchpanel
- Configurable red and green status lights indicate a room's availability or call status
- High speed USB 2.0 port
- Can be mounted in a two-gang junction box, or on a wall, lectern, or any flat surface, including glass

| Model | Version Description | Part Number |
|------------------|-------------------------------|-------------|
| TLP Pro 1025M | Black - Wall Mount | 60-1566-02 |
| TLP Pro 1025M | White - Wall Mount | 60-1566-03 |
| TLP Pro 1025M NC | Black - Wall Mount, No Camera | 60-1566-12 |
| TLP Pro 1025M NC | White - Wall Mount, No Camera | 60-1566-13 |



TLP Pro 725T

7" Tabletop TouchLink Pro Touchpanel

Unique Features

- 7" capacitive touchscreen with 1024x600 resolution and 24-bit color depth
- Gorilla Glass® screen is tough, scratch and smudge-resistant
- Configurable red and green status lights indicate a room's availability or call status
- Motion detector wakes touchpanel
- High speed USB 2.0 port

| Model | Version Description | Part Number |
|-----------------|-----------------------------|-------------|
| TLP Pro 725T | Black - Tabletop | 60-1562-02 |
| TLP Pro 725T | White - Tabletop | 60-1562-03 |
| TLP Pro 725T NC | Black - Tabletop, No Camera | 60-1562-12 |
| TLP Pro 725T NC | White - Tabletop, No Camera | 60-1562-13 |



TOUCHLINK PRO TOUCHPANELS

TLP Pro 725M

7" Wall Mount TouchLink Pro Touchpanel

Unique Features

- 7" capacitive touchscreen with 1024x600 resolution and 24-bit color depth
- Gorilla Glass® screen is tough, scratch and smudge-resistant
- Digital input allows for a connection with a variety of devices, such as sensors and switches
- Motion detector wakes touchpanel
- Configurable red and green status lights indicate a room's availability or call status
- High speed USB 2.0 port
- Can be mounted in a two-gang junction box, or on a wall, lectern, or any flat surface, including glass



| Model | Version Description | Part Number |
|-----------------|-------------------------------|-------------|
| TLP Pro 725M | Black - Wall Mount | 60-1563-02 |
| TLP Pro 725M | White - Wall Mount | 60-1563-03 |
| TLP Pro 725M NC | Black - Wall Mount, No Camera | 60-1563-12 |
| TLP Pro 725M NC | White - Wall Mount, No Camera | 60-1563-13 |

TLP Pro 725C

7" Cable Cubby TouchLink Pro Touchpanel

Unique Features

- 7" capacitive flip-up touchscreen with 1024x600 resolution and 24-bit color depth
- Gorilla Glass® screen is tough, scratch and smudge-resistant
- Cable Access Enclosure design offers easy access to AV, data, and power connections
- Integrated lid switch automatically wakes the touchpanel when opened and can trigger any other system function



| Model | Version Description | Part Number |
|-----------------|----------------------------------|-------------|
| TLP Pro 725C | Black - w/o AC Module | 60-1564-02 |
| TLP Pro 725C NC | Black - w/o AC Module, No Camera | 60-1564-12 |

TLP Pro 525T

5" Tabletop TouchLink Pro Touchpanel

Unique Features

- 5" capacitive touchscreen with 800x480 resolution and 24-bit color depth
- Gorilla Glass® screen is tough, scratch and smudge-resistant
- Kensington lock support
- Motion detector wakes touchpanel
- Configurable red and green status lights indicate a room's availability or call status
- High speed USB 2.0 port



| Model | Version Description | Part Number |
|-----------------|-----------------------------|-------------|
| TLP Pro 525T | Black - Tabletop | 60-1559-02 |
| TLP Pro 525T | White - Tabletop | 60-1559-03 |
| TLP Pro 525T NC | Black - Tabletop, No Camera | 60-1559-12 |
| TLP Pro 525T NC | White - Tabletop, No Camera | 60-1559-13 |

TLP Pro 525M

5" Wall Mount TouchLink Pro Touchpanel

Unique Features

- 5" capacitive touchscreen with 800x480 resolution and 24-bit color depth
- Gorilla Glass® screen is tough, scratch and smudge-resistant
- Digital input allows for a connection with a variety of devices, such as sensors and switches
- Motion detector wakes touchpanel
- Configurable red and green status lights indicate a room's availability or call status
- High speed USB 2.0 port
- Can be mounted in a one-gang junction box, or on a wall, lectern, or any flat surface, including glass

| Model | Version Description | Part Number |
|-----------------|-------------------------------|-------------|
| TLP Pro 525M | Black - Wall Mount | 60-1561-02 |
| TLP Pro 525M | White - Wall Mount | 60-1561-03 |
| TLP Pro 525M NC | Black - Wall Mount, No Camera | 60-1561-12 |
| TLP Pro 525M NC | White - Wall Mount, No Camera | 60-1561-13 |



TLP Pro 525C

5" Cable Cubby TouchLink Pro Touchpanel

Unique Features

- 5" capacitive flip-up touchscreen with 800x480 resolution and 24-bit color depth
- Gorilla Glass® screen is tough, scratch and smudge-resistant
- Cable Access Enclosure design offers easy access to AV, data, and power connections
- Integrated lid switch automatically wakes the touchpanel when opened and can trigger any other system function

| Model | Version Description | Part Number |
|-----------------|----------------------------------|-------------|
| TLP Pro 525C | Black - w/o AC Module | 60-1560-02 |
| TLP Pro 525C NC | Black - w/o AC Module, No Camera | 60-1560-12 |



TLP Pro 320M

3.5" Wall Mount TouchLink Pro Touchpanel

Unique Features

- 3.5" LCD touchscreen with 320x240 resolution and 18-bit color depth
- Eight customizable backlit buttons and a user-friendly volume knob
- Configurable red and green status lights indicate a room's availability or call status
- Mounts on a wall, lectern, or any flat surface

| Model | Version Description | Part Number |
|--------------|---------------------|-------------|
| TLP Pro 320M | Black - Wall Mount | 60-1451-02 |
| TLP Pro 320M | White - Wall Mount | 60-1451-03 |



TOUCHLINK PRO TOUCHPANELS

TLP Pro 320C

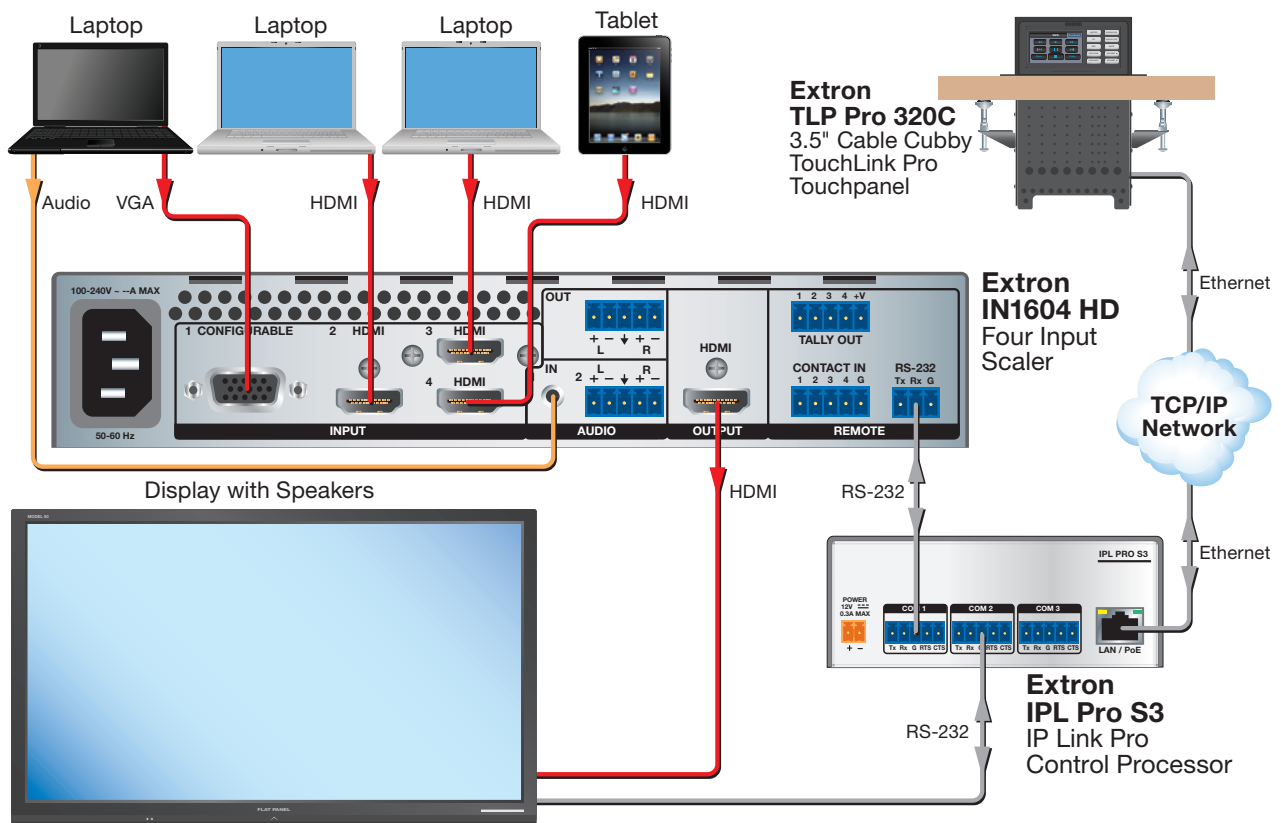
3.5" Cable Cubby TouchLink Pro Touchpanel

Unique Features

- 3.5" flip-up LCD touchscreen with 320x240 resolution and 18-bit color depth
- Ten customizable backlit buttons
- Cable Cubby design offers easy access to AV, data, and power connections
- Integrated lid switch automatically wakes the touchpanel when opened and can trigger any other system function
- Convenient LED lighting illuminates power and AV Cable Cubby area
- Top surface available in black anodized finish



| Model | Version Description | Part Number |
|--------------|-------------------------|--------------|
| TLP Pro 320C | Black - w/o AC Module | 60-1452-0200 |
| TLP Pro 320C | Black - w/US AC Module | 60-1452-020A |
| TLP Pro 320C | Br Alum - w/o AC Module | 60-1452-0210 |



TOUCHLINK INTERFACE

TLI Pro 101

TouchLink Interface

The Extron TLI Pro 101 is a TouchLink Interface that allows a third party touchscreen display to be used as a point of control within an Extron Pro Series control system. This unique interface includes a scaled HDCP-compliant HDMI input for video preview. The scaled output supports displays from 800x600 to 1920x1200, as well as HDTV 1080p/60 and 2K. The TLI Pro 101 works with any Extron IP Link® Pro control processor, enabling third party touchscreen devices to be used for complete, interactive control of a broad range of source devices.

Features

- Compatible with third party touchscreen displays up to 1920x1200, including HDTV 1080p/60 and 2K
- Fast processing and ample memory – Allows for quicker configuration uploads and more storage for GUI pages.

Model

TLI Pro 101

Version Description

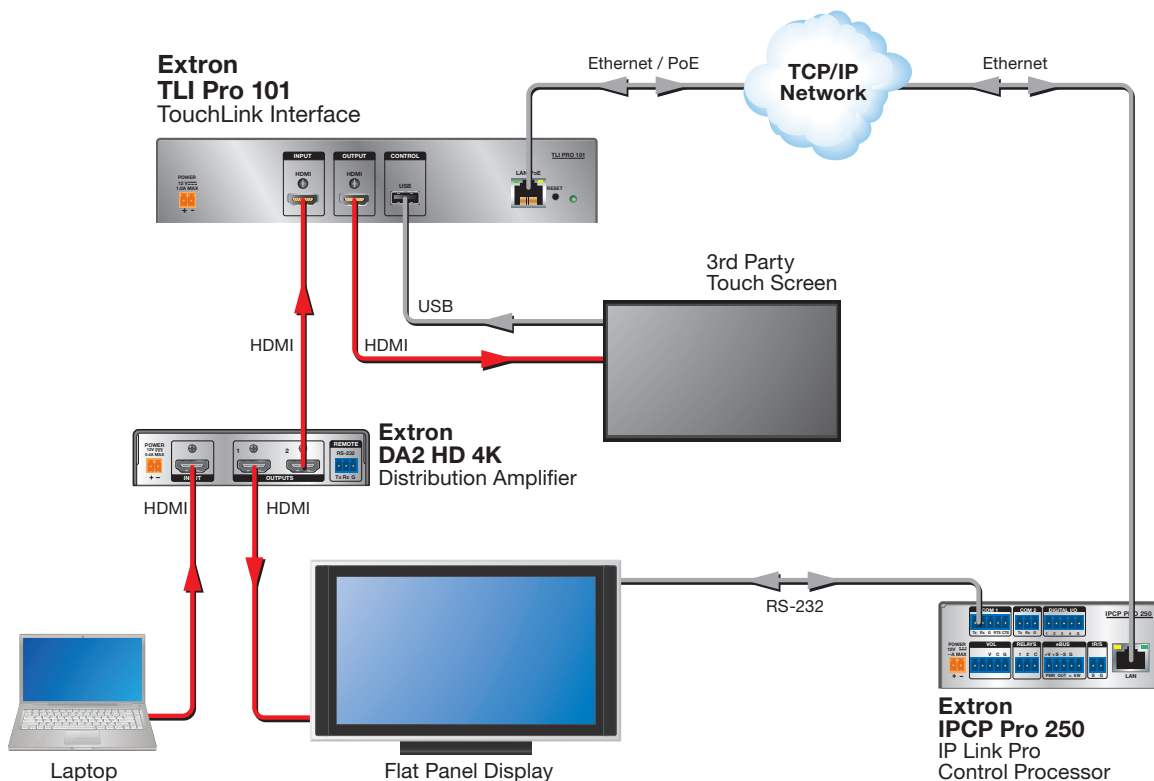
TouchLink Interface

Part Number

60-1083-01



- Compatible with all IP Link Pro control processors
- Power over Ethernet allows the interface to receive power and communication over a single Ethernet cable, eliminating the need for a local power supply
- Supports HDCP-compliant HDMI for full-motion video preview and monitoring
- Advanced Extron video signal processing with a high performance scaling engine
- One high speed USB 2.0 port for third-party touchscreens or HID support



TOUCHLINK PRO CONTROL SYSTEMS



TouchLink Pro control systems are complete solutions that combine a TouchLink Pro touchpanel with an integrated IP Link Pro control processor. This all-in-one approach streamlines system designs by consolidating essential control system components, freeing up space, and easing integration. The included port expansion adapter makes it easy to add traditional control ports when needed, directly at the touchpanel. All TLC Pro control systems maintain the same stylish appearance and high performance of our TouchLink Pro touchpanels and are ideal for any environment requiring a customizable, all-in-one touchpanel control system.

These new TouchLink Pro control systems can be customized using Extron GUI Designer software and configured using Extron Global Configurator® Plus or Global Configurator Professional software. All TouchLink Pro control systems integrate seamlessly with Extron's award-winning GlobalViewer® Enterprise software for complete AV resource monitoring, management, and control over a computer network.

Series Common Features

- ▶ **Integrated control solution combines a TouchLink Pro touchpanel and an IP Link Pro control processor into one product**
- ▶ **Provides control of multiple devices directly from the Ethernet port**
- ▶ **Port expansion adapter adds additional control ports:**
 - Two bidirectional RS 232 ports
 - One contact closure port
 - One IR port
 - Two relays
- ▶ **On-board digital input allows for a connection with a variety of devices, such as sensors and switches**
- ▶ **All-in-one design saves space in equipment racks and simplifies system designs**
- ▶ **Quad-core processor and ample, high performance memory**
- ▶ **Tough Gorilla Glass® screen is scratch and smudge-resistant**
- ▶ **Built-in speaker provides audio feedback from button presses**
- ▶ **Light sensor adjusts screen brightness as the ambient room lighting changes**
- ▶ **Vast library of Pro Series device drivers for use with Global Configurator**
- ▶ **Remotely Manage, monitor, and control using GVE**

TLC Pro 526M

5" Wall Mount TouchLink Pro Control System

Unique Features

- 5" capacitive touchscreen with 800x480 resolution and 24-bit color depth
- Can be mounted in a one-gang junction box, or on a wall, lectern, or any flat surface

| Model | Version Description | Part Number |
|-----------------|-------------------------------|-------------|
| TLC Pro 526M | Black - Wall Mount | 60-1853-02 |
| TLC Pro 526M | White - Wall Mount | 60-1853-03 |
| TLC Pro 526M NC | Black - Wall Mount, No Camera | 60-1853-12 |
| TLC Pro 526M NC | White - Wall Mount, No Camera | 60-1853-13 |



TLP Pro 726M

7" Wall Mount TouchLink Pro Control System

Unique Features

- 7" capacitive touchscreen with 1024x600 resolution and 24-bit color depth
- Can be mounted in a two-gang junction box, or on a wall, lectern, or any flat surface

| Model | Version Description | Part Number |
|-----------------|-------------------------------|-------------|
| TLC Pro 726M | Black - Wall Mount | 60-1854-02 |
| TLC Pro 726M | White - Wall Mount | 60-1854-03 |
| TLC Pro 726M NC | Black - Wall Mount, No Camera | 60-1854-12 |
| TLC Pro 726M NC | White - Wall Mount, No Camera | 60-1854-13 |



TLP Pro 1026M

10" Wall Mount TouchLink Pro Control System

Unique Features

- 10" capacitive touchscreen with 1280x800 resolution and 24-bit color depth
- Can be mounted in a two-gang junction box, or on a wall, lectern, or any flat surface

| Model | Version Description | Part Number |
|------------------|-------------------------------|-------------|
| TLP Pro 1026M | Black - Wall Mount | 60-1855-02 |
| TLP Pro 1026M | White - Wall Mount | 60-1855-03 |
| TLP Pro 1026M NC | Black - Wall Mount, No Camera | 60-1855-12 |
| TLP Pro 1026M NC | White - Wall Mount, No Camera | 60-1855-13 |



User Interface Design Software for TouchLink® Pro

Extron GUI Designer is a software application used to design, create, and maintain Extron TouchLink® Pro user interfaces. Begin with ready-to-use design templates and resource kits, or start from scratch and build your own layout using our comprehensive software. The available design elements are fully customizable and matched carefully to popular AV system applications. In many cases, all the input sources, display control, and environmental settings are already in place. These resources are fully developed and include complete, detailed documentation.

Ready-to-use Templates and Resource Kits

GUI Designer includes ready-to-use templates for single display rooms, dual display rooms, divisible rooms, multi-image systems, and videoconference suites that can be used for TouchLink Pro products. Since system designs vary, our templates can be customized to suit the specific needs of any application. The GUI Designer design environment enables a wide variety of design choices for buttons, colors, logos, font styles, and more.

Start From Scratch and Design Your Own Layout

A wide array of design options enables users to develop their own touchscreen layouts to meet almost any system requirement. The GUI Designer resource library of shapes, graphics, and fonts provide a wide variety of choices for design of pages and pop ups to provide transport controls, multi-state buttons, 3D effects, video windows, dynamic text, and more. In addition, users can import their own images and font files into GUI Designer and use the resource management tool to provide further customization capabilities. The Designer Window displays the layout design in progress, so the changes can be seen while the customization occurs.

Object Layering Indicator
Notifies the user that there is at least one object that is being covered by another

Dynamic Scaling
Allows easy conversion of GUI designs between different size touchpanels

Share and Transfer Projects
Easily share and transfer projects while preserving all project resources

Intuitive Drag-and-Drop Interface
Familiar, easy-to-use menus and toolbars

Workspace Window
Quick point-and-click access to multiple projects and individual project pages

Controls Window
For adding basic buttons, level indicators, date/time displays, video windows, and more

Resource Library
Buttons, borders, 3D effects, shapes, graphics, fonts, and more

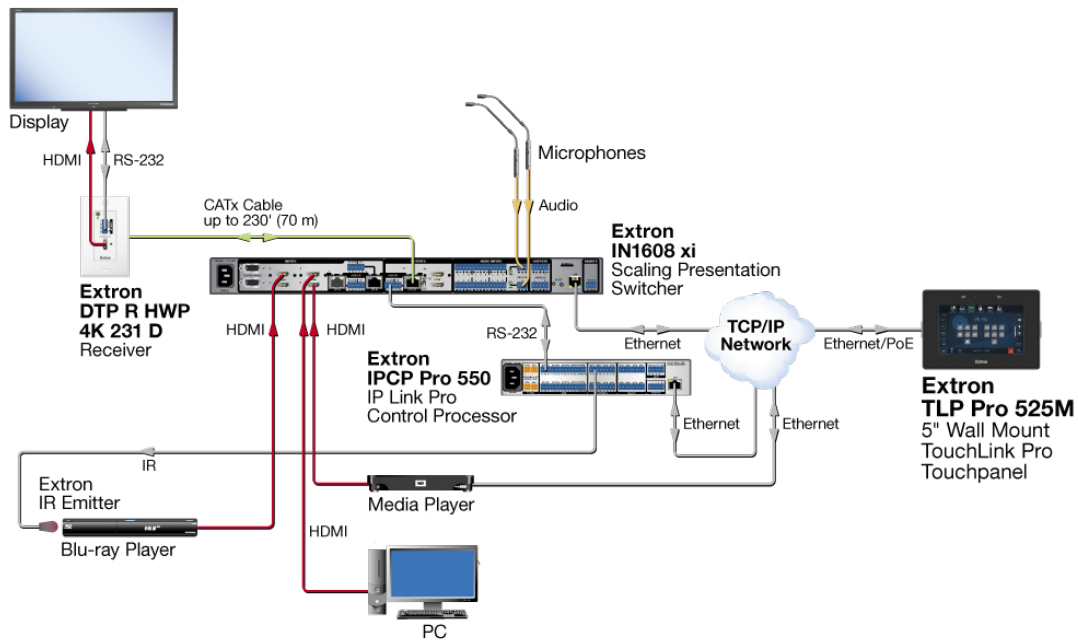
Properties Window
Provides quick view and edit of object properties

Designer Window
Displays layout of main page and popup pages

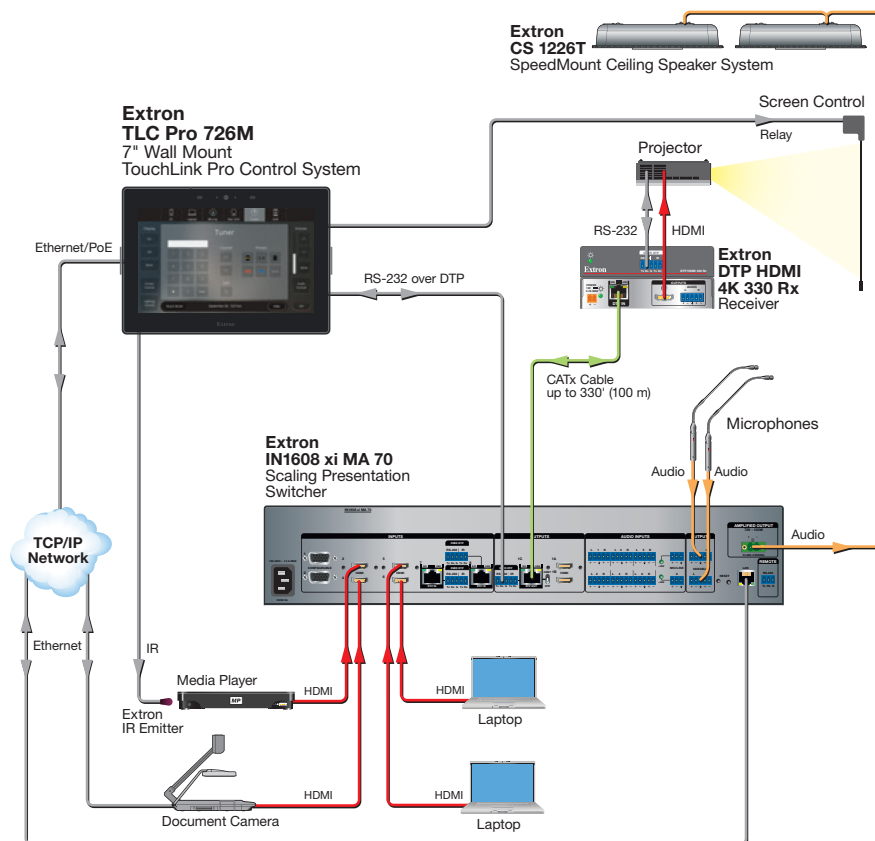
Control States Window
Easily modify and customize the visual states of a button

APPLICATION DIAGRAMS

TLP Pro 525M with an IPCP Pro 550 in a Small Conference Room



TLC Pro 726M with an IN1608 xi MA 70 Used Within a Classroom





Extron Control Systems Certification Programs

Establish Your Knowledge of Extron Control Systems

Extron offers three control systems certification programs designed to prepare individuals to successfully deploy and maintain customized AV control systems built around our Pro Series control systems.

Certification Comparison



Extron Control Specialist - ECS

Extend Your Ability to Customize and Manage Extron Pro Series Systems

Course Content

ECS is a two-day course that consists of the following general categories:

- Learn Global Configurator Plus, and use its powerful capabilities to configure and manage Extron Pro Series control systems
- Control system design concepts
- Configure a wide range of room control functions using Global Configurator Plus
- Create custom control interfaces using GUI Designer software, plus GUI design best practices
- Validate Pro Series control systems in multiple AV environments using acquired knowledge of installation, configuration, and commissioning principles



Extron Control Professional - ECP

Unleash the Power of Global Configurator Professional for Advanced Extron Pro Series Control Systems

Course Content

ECP is a three-day course that consists of:

- Learn Global Configurator Professional software and the advanced features used in complex system designs
- Sophisticated control system design concepts and advanced configuration techniques
- Create custom control interfaces using GUI Designer software, plus GUI design best practices
- Validate complex Pro Series control systems in multiple AV environments using acquired knowledge of installation, configuration, and commissioning principles



Extron Authorized Programmer - EAP

Learn Global Scripter and ControlScript to Design Powerful, Programmable Control Systems

Course Content

EAP is a four-day course that consists of:

- Use Global Scripter software and ControlScript, the Extron Python library for AV professionals, to program Extron Pro Series Control Systems
- Apply best practices and troubleshooting techniques to ensure optimum system performance
- Utilize methodologies for implementing and developing reusable modules for control system programs

LEARN MORE

To find out more about the Extron Control Systems Certification programs, contact your Extron S3 Customer Support Representative.

WORLDWIDE SALES OFFICES

Anaheim • Raleigh • Silicon Valley • Dallas • New York • Washington, DC • Toronto • Mexico City • Paris • London
Frankfurt • Madrid • Stockholm • Amersfoort • Moscow • Dubai • Johannesburg • Tel Aviv • Sydney • Melbourne
Bangalore • Mumbai • New Delhi • Singapore • Seoul • Shanghai • Beijing • Hong Kong • Tokyo

www.extron.com