

# Between-series adapters

All models with flanges at both ends are fully water-proof. Joints and holes for screws are covered with high quality EPDM or silicone O-rings. These gaskets also maintain internal gas pressure in pressurized systems.

Adapters with EIA end do not include inners (coupling elements). See details on page 138 in paragraph Short coupling elements with gaskets and screws.

These charts will help you find the product you are looking for.

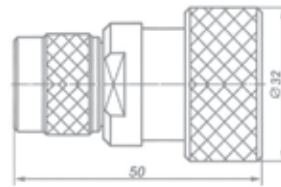
	N male	N female	DIN 7/16 male	DIN 7/16 female
N male			CEL 50-N-16-903	CEL 50-N-16-904
N female		CEL 50-N-511* CEL 50-N-512*	CEL 50-N-16-929	CEL 50-N-16-902
DIN 7/16 male	CEL 50-N-16-903	CEL 50-N-16-929	CEL 50-16-039	
DIN 7/16 female	CEL 50-N-16-904	CEL 50-N-16-902		CEL 50-16-033** CEL 50-16-034**
EIA 7/8"	CEL 50-N-22-908	CEL 50-N-22-905	CEL 50-16-22-930	CEL 50-16-22-921 CEL 50-16-22-923
EIA 1 5/8"	CEL 50-N-40-909	CEL 50-N-40-906	CEL 50-16-40-931	CEL 50-16-40-924
EIA 3 1/8"		CEL 50-N-80-907		
EIA 4 1/2"		CEL 50-N-105-912		
EIA 5"		CEL 50-N-125-912		
EIA 6 1/8"		CEL 50-N-155-912		

\* See page 112

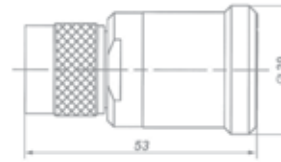
\*\* See page 122

	EIA 7/8"	EIA 1 5/8"	EIA 3 1/8"	EIA 4 1/2"	EIA 5"
N male	CEL 50-N-22-908	CEL 50-N-40-909			
N female	CEL 50-N-22-905	CEL 50-N-40-906	CEL 50-N-80-907		
DIN 7/16 male	CEL 50-16-22-930	CEL 50-16-40-931			
DIN 7/16 female	CEL 50-16-22-921 CEL 50-16-22-923	CEL 50-16-40-924			
EIA 7/8"		CEL 50-22-40-941 CEL 50-22-40-947	CEL 50-22-80-942		
EIA 1 5/8"	CEL 50-22-40-941 CEL 50-22-40-947		CEL 50-40-80-951 CEL 50-40-80-953		CEL 50-40-125-970
EIA 3 1/8"	CEL 50-22-80-942	CEL 50-40-80-951 CEL 50-40-80-953			CEL 50-80-125-969
EIA 4 1/2"		CEL 50-105-40-973	CEL 50-80-105-961 CEL 50-80-105-962		CEL 50-125-105-971
EIA 6 1/8"		CEL 50-40-155-954	CEL 50-80-155-963	CEL 50-105-155-967	CEL 50-125-155-001 CEL 50-155-125-972

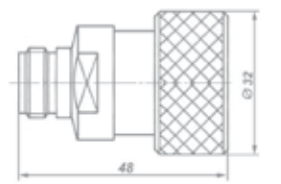
<b>TYPE</b>	<b>CEL 50-N-16-903</b>
<b>CODE</b>	73373
<b>WEIGHT</b>	114 g
<b>DESCRIPTION</b>	N male - DIN 7/16 male



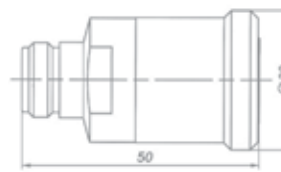
<b>TYPE</b>	<b>CEL 50-N-16-904</b>
<b>CODE</b>	94617
<b>WEIGHT</b>	113 g
<b>DESCRIPTION</b>	N male - DIN 7/16 female



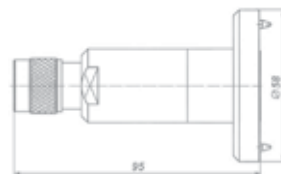
<b>TYPE</b>	<b>CEL 50-N-16-929</b>
<b>CODE</b>	81076
<b>WEIGHT</b>	108 g
<b>DESCRIPTION</b>	N female - DIN 7/16 male



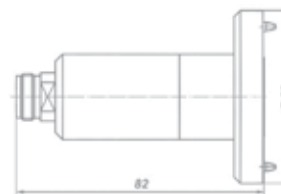
<b>TYPE</b>	<b>CEL 50-N-16-902</b>
<b>CODE</b>	94616
<b>WEIGHT</b>	108 g
<b>DESCRIPTION</b>	N female - DIN 7/16 female



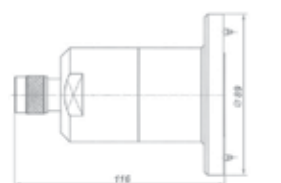
<b>TYPE</b>	<b>CEL 50-N-22-908</b>
<b>CODE</b>	67191
<b>WEIGHT</b>	375 g
<b>DESCRIPTION</b>	N male - EIA 7/8" female
<b>REMARK</b>	Inners not included, see details on page 138.



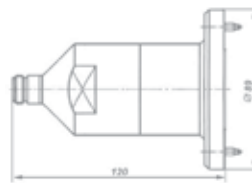
<b>TYPE</b>	<b>CEL 50-N-22-905</b>
<b>CODE</b>	64939
<b>WEIGHT</b>	350 g
<b>DESCRIPTION</b>	N female - EIA 7/8" female
<b>REMARK</b>	Inners not included, see details on page 138.



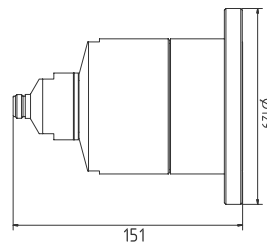
<b>TYPE</b>	<b>CEL 50-N-40-909</b>
<b>CODE</b>	66498
<b>WEIGHT</b>	1.130 g
<b>DESCRIPTION</b>	N male - EIA 1 5/8" female
<b>REMARK</b>	Inners not included, see details on page 138.



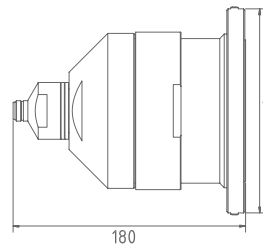
**TYPE** CEL 50-N-40-906  
**CODE** 64940  
**WEIGHT** 1.165 g  
**DESCRIPTION** N female - EIA 1 5/8" female  
**REMARK** Inners not included, see details on page 138.



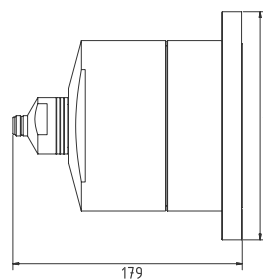
**TYPE** CEL 50-N-80-907  
**CODE** 81895  
**WEIGHT** 3.100 g  
**DESCRIPTION** N female - EIA 3 1/8" female  
**REMARK** Inners not included, see details on page 138.



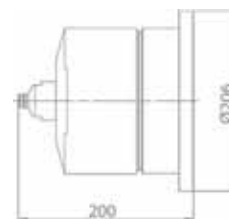
**TYPE** CEL 50-N-105-912  
**CODE** 53818  
**WEIGHT** 5.300 g  
**DESCRIPTION** N female - EIA 4 1/2" female  
**REMARK** Inners not included, see details on page 138.



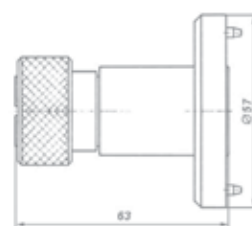
**TYPE** CEL 50-N-125-912  
**CODE** 46024  
**WEIGHT** 3.800g  
**DESCRIPTION** N female - EIA 5" female  
**REMARK** Inners not included, see details on page 138.



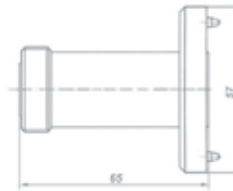
**TYPE** CEL 50-N-155-912  
**CODE** 53597  
**WEIGHT** 9.500 g  
**DESCRIPTION** N female - EIA 6 1/8" female  
**REMARK** Inners not included, see details on page 138.



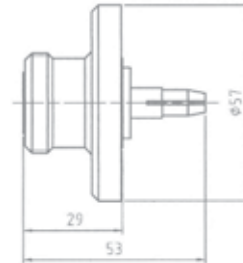
**TYPE** CEL 50-16-22-930  
**CODE** 64938  
**WEIGHT** 292 g  
**DESCRIPTION** DIN 7/16 male - EIA 7/8" female  
**REMARK** Inners not included, see details on page 138.



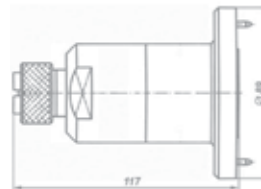
<b>TYPE</b>	<b>CEL 50-16-22-923</b>
<b>CODE</b>	64937
<b>WEIGHT</b>	298 g
<b>DESCRIPTION</b>	DIN 7/16 female - EIA 7/8" female
<b>REMARK</b>	Inners not included, see details on page 138.



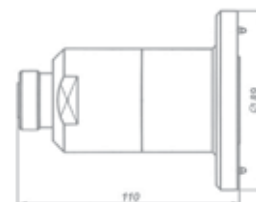
<b>TYPE</b>	<b>CEL 50-16-22-921</b>
<b>CODE</b>	91592
<b>WEIGHT</b>	250 g
<b>DESCRIPTION</b>	DIN 7/16 female - EIA 7/8" male



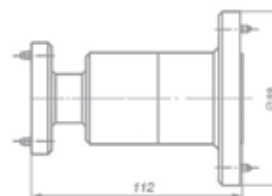
<b>TYPE</b>	<b>CEL 50-16-40-931</b>
<b>CODE</b>	67136
<b>WEIGHT</b>	1.149 g
<b>DESCRIPTION</b>	DIN 7/16 male - EIA 1 5/8" female
<b>REMARK</b>	Inners not included, see details on page 138.



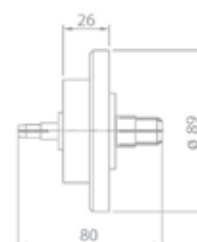
<b>TYPE</b>	<b>CEL 50-16-40-924</b>
<b>CODE</b>	65194
<b>WEIGHT</b>	1.138 g
<b>DESCRIPTION</b>	DIN 7/16 female - EIA 1 5/8" female
<b>REMARK</b>	Inners not included, see details on page 138.



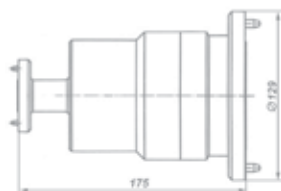
<b>TYPE</b>	<b>CEL 50-22-40-941</b>
<b>CODE</b>	64934
<b>WEIGHT</b>	1.296 g
<b>DESCRIPTION</b>	EIA 7/8" female - EIA 1 5/8" female
<b>REMARK</b>	Inners not included, see details on page 138.



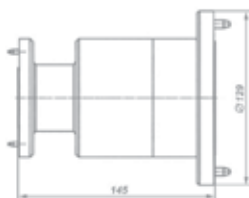
<b>TYPE</b>	<b>CEL 50-22-40-947</b>
<b>CODE</b>	96764
<b>WEIGHT</b>	843 g
<b>DESCRIPTION</b>	EIA 7/8" male - EIA 1 5/8" male



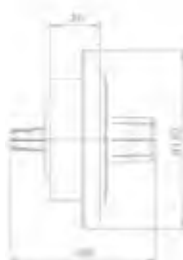
<b>TYPE</b>	<b>CEL 50-22-80-942</b>
<b>CODE</b>	69251
<b>WEIGHT</b>	3.930 g
<b>DESCRIPTION</b>	EIA 7/8" female - EIA 3 1/8" female
<b>REMARK</b>	Inners not included, see details on page 138.



<b>TYPE</b>	<b>CEL 50-40-80-951</b>
<b>CODE</b>	64935
<b>WEIGHT</b>	3.500 g
<b>DESCRIPTION</b>	EIA 1 5/8" female - EIA 3 1/8" female
<b>REMARK</b>	Inners not included, see details on page 138.



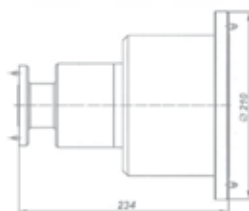
<b>TYPE</b>	<b>CEL 50-40-80-953</b>
<b>CODE</b>	91148
<b>WEIGHT</b>	1.780 g
<b>DESCRIPTION</b>	EIA 1 5/8" male - EIA 3 1/8" male



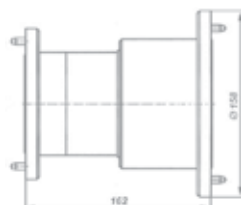
<b>TYPE</b>	<b>CEL 50-40-125-970</b>
<b>CODE</b>	46170
<b>WEIGHT</b>	6.000 g
<b>DESCRIPTION</b>	EIA 1 5/8" male - EIA 5" male



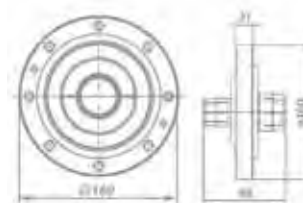
<b>TYPE</b>	<b>CEL 50-40-155-954</b>
<b>CODE</b>	72185
<b>WEIGHT</b>	6.320 g
<b>DESCRIPTION</b>	EIA 1 5/8" female - EIA 6 1/8" female
<b>REMARK</b>	Inners not included, see details on page 138.



<b>TYPE</b>	<b>CEL 50-80-105-961</b>
<b>CODE</b>	64936
<b>WEIGHT</b>	6.650 g
<b>DESCRIPTION</b>	EIA 3 1/8" female - EIA 4 1/2" female
<b>REMARK</b>	Inners not included, see details on page 138.



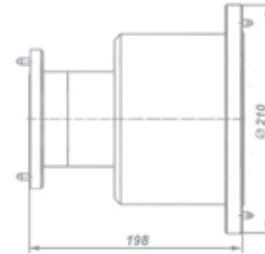
<b>TYPE</b>	<b>CEL 50-80-105-962</b>
<b>CODE</b>	94354
<b>WEIGHT</b>	3.000 g
<b>DESCRIPTION</b>	EIA 3 1/8" male - EIA 4 1/2" male



<b>TYPE</b>	<b>CEL 50-80-125-969</b>
<b>CODE</b>	46166
<b>WEIGHT</b>	6.200 g
<b>DESCRIPTION</b>	EIA 3 1/8" male – EIA 5" male



<b>TYPE</b>	<b>CEL 50-80-155-963</b>
<b>CODE</b>	66775
<b>WEIGHT</b>	9.540 g
<b>DESCRIPTION</b>	EIA 3 1/8" female - EIA 6 1/8" female
<b>REMARK</b>	Inners not included, see details on page 138.



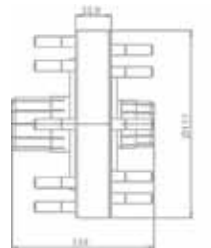
<b>TYPE</b>	<b>CEL 50-105-40-973</b>
<b>CODE</b>	46230
<b>WEIGHT</b>	4.900 g
<b>DESCRIPTION</b>	EIA 4 1/2" male – EIA 1 5/8" male



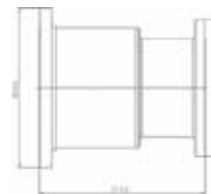
<b>TYPE</b>	<b>CEL 50-105-155-967</b>
<b>CODE</b>	98784
<b>WEIGHT</b>	7.500 g
<b>DESCRIPTION</b>	EIA 4 1/2" male - EIA 6 1/8" male



<b>TYPE</b>	<b>CEL 50-125-105-971</b>
<b>CODE</b>	46174
<b>WEIGHT</b>	5.500 g
<b>DESCRIPTION</b>	EIA 5" male - 4" 1/2" male



<b>TYPE</b>	<b>CEL 50-125-155-001</b>
<b>CODE</b>	53921
<b>WEIGHT</b>	7.400 g
<b>DESCRIPTION</b>	EIA 5" female - EIA 6 1/8" female
<b>REMARK</b>	Inners not included, see details on page 138.



<b>TYPE</b>	<b>CEL 50-155-125-972</b>
<b>CODE</b>	46178
<b>WEIGHT</b>	8.000 g
<b>DESCRIPTION</b>	EIA 5" male - EIA 6 1/8" male

