

10.1" 1500 NITS HIGH BRIGHTNESS INDUSTRIAL-GRADE TOUCH MONITOR



1500 Nits



1920×1200



10-Point Touch



Auto Dimming



HDMI / VGA
TPYE-C



LED PANEL LIFE TIME

A selection of high quality industrial LCD with a longer life time.



OPTIONAL IP65 FRAME

Features with HDMI / VGA extension cable and IP65 housing.



FA1019/C | FA1019/T
Without touch | With touch

1500 NITS



Touch monitor features with 1500 nits high brightness for outdoor sunlight readable.



10.1" FHD

10.1" Industrial-grade touch screen panel with 1920×1200 resolution.



1500 NITS

The screen can still be seen clearly in outdoor use without hindering operation.



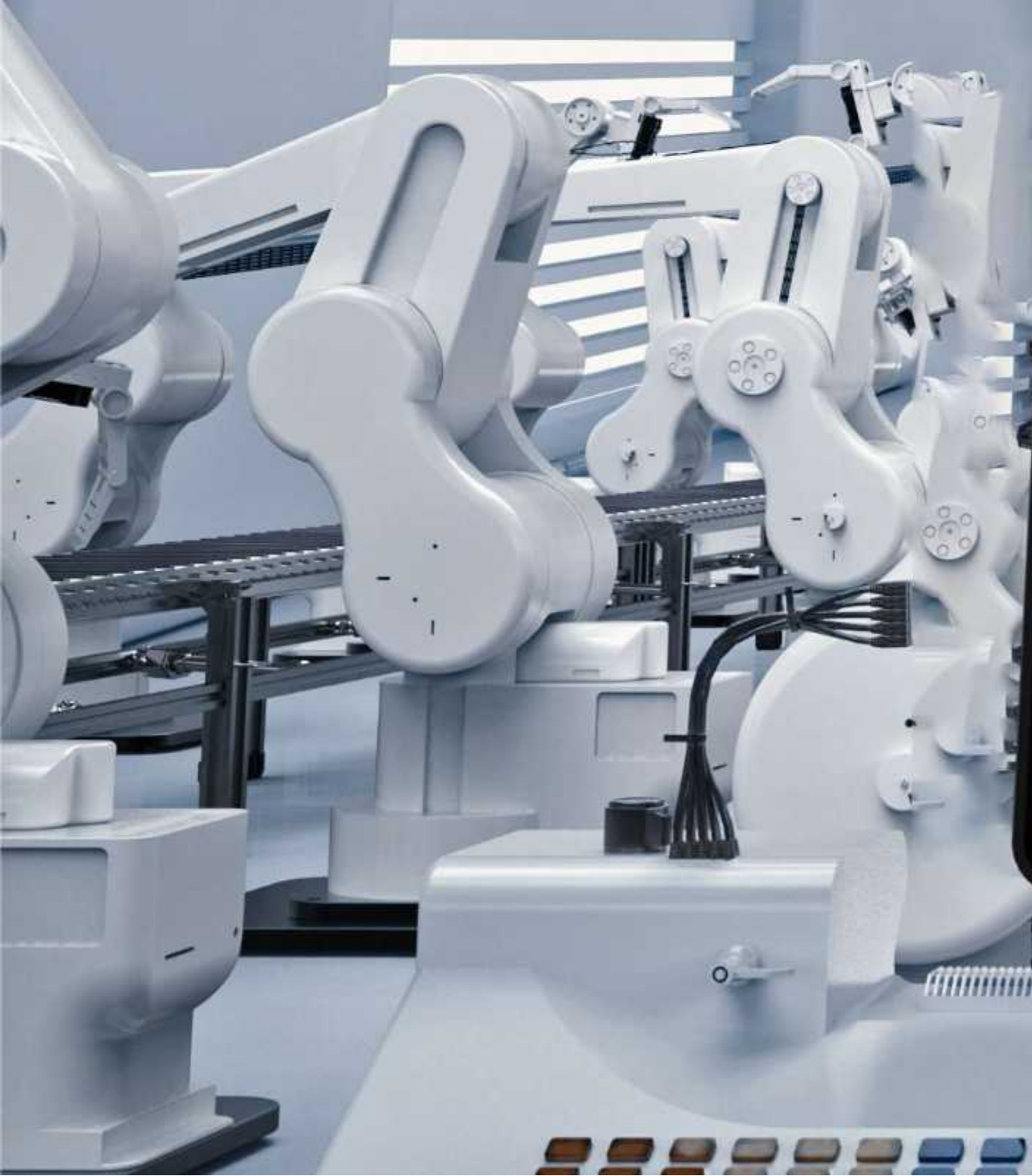
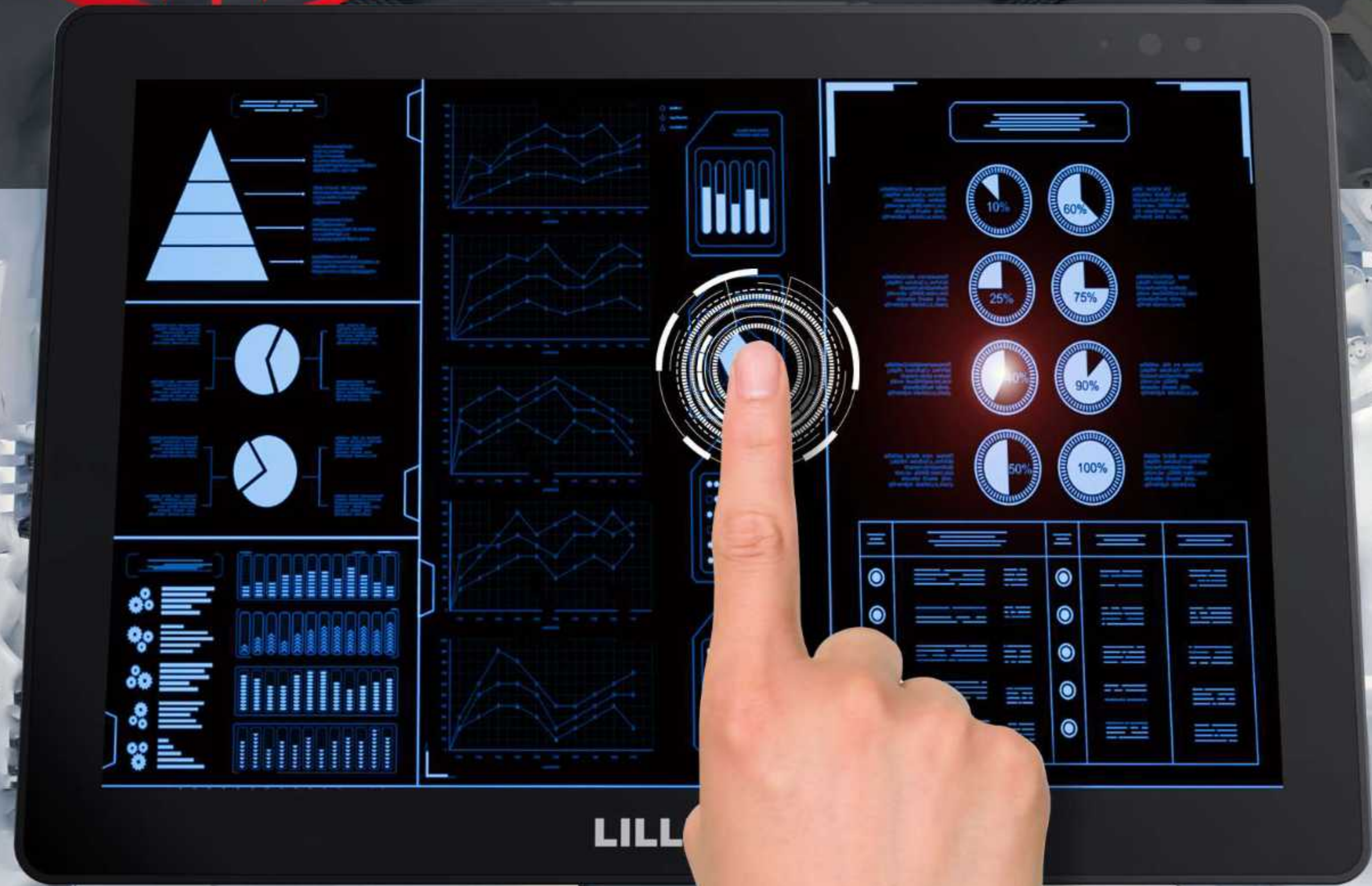
AUTO DIMMING

Depending on the intensity of ambient light, the brightness of screen will be automatically adjusted to save power.

50000 Hours

LED PANEL LIFE TIME

Hardware engineers selected high quality industrial-grade LCD screen through multiple tests, giving the monitors an exceptional working life.



HDMI / VGA / USB-C

RICH INTERFACES

The monitor has a larger number of interfaces, including a USB Type-C type interface that can transmit both video signals and touch functions, making wiring easier.



ANTI-DROP
USB Type-C cable with anti-drop design.

DC POWER IN
12V-24V Input.

USB TYPE-C
For touch function or video signal from PC.

VGA IN
Support up to 1080p 60Hz.

HDMI IN
Support up to 4K 30Hz.

EARPHONE JACK
3.5mm, audio output.

OPTIONAL IP65 FRAME

WITH HDMI AND VGA EXTENSION CABLE

Rugged extension cable designed for body waterproofing & dustproofing, with two different options for HDMI and VGA ports.



USB IN
For Touch.

HDMI IN
Support up to 2160p 30Hz.

DC POWER IN
12V-24 Input.

VGA PORT
For Optional

IP65 RATING

FOR OPTIONAL IP65 FRAME

Monitor is designed to carry IP65 degree of protection which offer complete protection against particles, and a good level of protection against water projected by a nozzle against monitor from any direction.





VESA 75MM BRACKET

Quality folding VESA 75mm bracket that can be placed on a table or fixed to ceiling.

SPECIFICATIONS

DISPLAY	Touch Screen	Capacitive touch
	Panel	10.1" LCD (Antiglare surface treatment)
	Physical Resolution	1920×1200
	Aspect Ratio	16:10
	Brightness	1500 nits
	Contrast	1000:1
	Viewing Angle	170°/ 170°(H/V)
	LED Panel Lifre Time	50000h
INPUT	HDMI	1
	VGA	1
	USB	1 (USB Type-C)
SUPPORTED FORMATS	HDMI	2160p 24/25/30, 1080p 24/25/30/50/60, 1080i 50/60, 720p 50/60...
	VGA	1080p 24/25/30/50/60, 1080pSF 24/25/30, 1080i 50/60, 720p 50/60...
	USB Type-C	1080p 24/25/30/50/60, 1080pSF 24/25/30, 1080i 50/60, 720p 50/60...
AUDIO IN/OUT	Speaker	1
	HDMI	8ch 24-bit
	Ear Jack	3.5mm - 2ch 48kHz 24-bit
POWER	Input Voltage	DC 12-24V
	Power Consumption	≤19W (12V)
ENVIRONMENT	IP Rating	IP65 (Only available for the monitor with extension cable)
	Operating Temperature	-20°C~60°C
	Storage Temperature	-30°C~80°C
DIMENSION	Dimension(LWD)	251mm × 170mm × 33mm
	Weight	820g
EXTENSION CABLE	HDMI Extension Cable	HDMI, USB-A (For touch)
	VGA Extension Cable	VGA, USB-A (For touch)



Standard

Optional IP65 Frame

ACCESSORIES

STANDARD				OPTIONAL IP65 FRAME				OPTIONAL	
									
12V 3A Power Adapter	HDMI A-A Cable	USB-C - C Cable (With Screw)	USB-A - C Cable (For Touch)	12V 3A Power Adapter	HDMI A-A Cable (HDMI Ver.)	VGA Cable (VGA Ver.)	USB-A - A Cable (For Touch)	VESA 75mm Bracket	Remote Control

